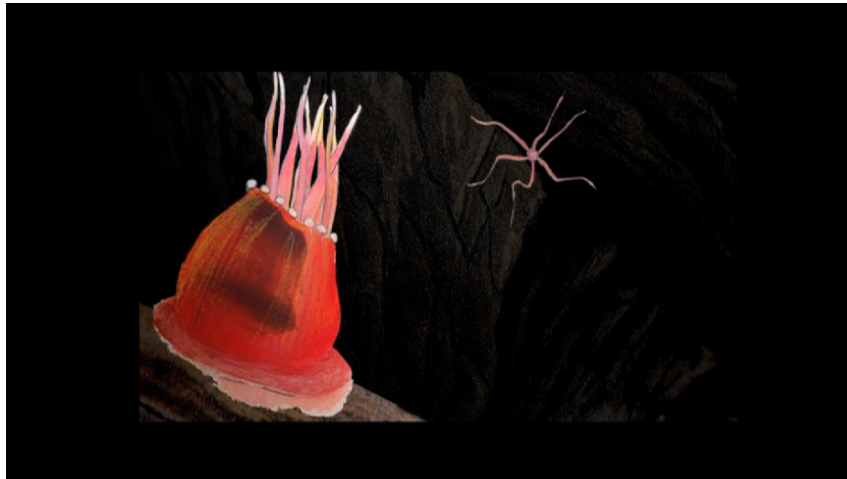


22 March 2011

Edwina Ashton's ...in a rose columned forest



...in a rose columned forest, Edwina Ashton

Animate Projects is delighted to present ...in a rose columned forest, Edwina Ashton's latest delicate and detailed animation.

Ashton layers ambiguous biro drawings with other photographic materials to create a slow moving insight into conjured up marine life creatures, allowing us to follow them in an isolated and beautifully saturated other world which lies beneath the sea.

...in a rose columned forest - Ashton's second animation - was inspired by 19th century naturalist and theologian Phillip Gosse and his meticulous study of marine life in Devon's rock pools, a merging of science, religion and isolation.

Ashton's narrative, in response to Gosse's illustrations and to his son Edmund's critical autobiography, explores the allure and peculiarity of eccentricity and idiosyncrasy with a mocking eye to British politeness.

...in a rose columned forest was co-commissioned by Phoenix Gallery and Animated Exeter, in association with Animate Projects.

-Ends-

Notes to editors:

...in a rose columned forest is online at animateprojects.org/films

...in a rose columned forest premiered at Phoenix Gallery, Exeter as part of the exhibition Out with the Hammers from 11 February to 20 March.

An interview with Edwina Ashton and an essay by Ingrid Swenson, Director of PEER accompanies the exhibition.

About Edwina Ashton

Edwina Ashton graduated from Goldsmith in 1996 and previously did a degree in philosophy. She has exhibited widely at various galleries in the UK including WORKS | PROJECTS in Bristol and Tate Britain in London. Edwina is represented by Frith Street Gallery, her next group exhibition is SHOW currently at The Jerwood Space, London. Edwina also teaches at Chelsea College of Art and Design.

About Phoenix Gallery

Exeter Phoenix presents a unique and exciting contemporary programme of dance, theatre, live art, music, spoken word, film and visual art with four exhibition spaces including Phoenix Gallery.

About Animate Projects

Animate Projects explores animation and its concepts in contemporary art practice. Our programme operates at the intersection of the contemporary visual arts, animation, film and design. We seek to offer artists a particular and supportive space to create new work and we enable a UK and international audience to engage with it via broadcast, gallery, cinema and online, and through critical debate.

Our recent projects include: Primitive, a multi-platform project by Apichatpong Weerasethakul; Fignant, a new commission by Hiraki Sawa; and Slow Action, a four part work about island utopias by Ben Rivers.

Animate Projects is supported by the National Lottery through Arts Council England. Visit us at animateprojects.org

Further press information:

Abigail Addison at Animate Projects

abigail@animateprojects.org

+44 (0)207 407 3944 or +44 (0)778 968 6903