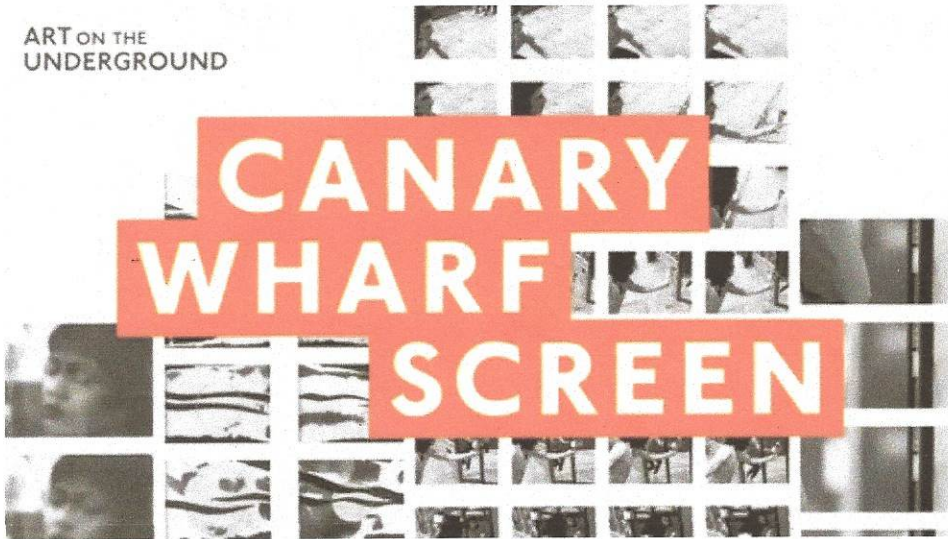


FASHION (/FASHION.ASPX) BEAUTY (/BEAUTY.ASPX) ACCESSORIES (/ACCESSORIES.ASPX) CULTURE (/CULTURE.ASPX) RADIO (/RADIO.ASPX) DESIGN (/DESIGN.ASPX) O:MAN (/O-MAN.ASPX) 30 May 2012

CULTURE - NEWS (/CULTURE-UPDATE) MOVE ON UP (/CULTURE/2012/05/MOVE-ON-UP.ASPX)

| YOU MIGHT LIKE THIS |



hawaiian print t-
EXCLUSIVE.
M
le

Spiked tartan dress
ow
120

Yves Saint Laurent
FIFTY RESIST
Foundation £29.50

ROUGE BUNNY
POLICE GLASSY

(http://click.linksynergy.com/...)

(http://www.zuneta.com/...)

(http://www.johnlewis.co.uk/...)

(http://www.johnlewis.co.uk/...)

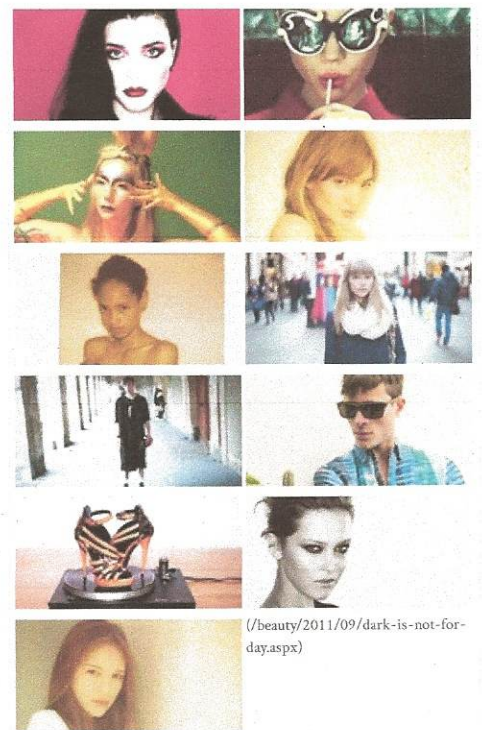
Public events in the summer don't come much more magical than a big screen erected in some beautiful location, being watched by tens of hundreds of people, all in relaxed good moods, in shorts and summer dresses, picnicking as the sun goes down and the night stays warm. You wouldn't necessarily expect this down in the Docklands.

Sure, this isn't quite a drive-in Saturday with your sweetheart, but TfL's art initiative, Art on the Underground, present the second curated commission for their Canary Wharf Screen, a big (Big) screen in that most corporate part of London.

Following Film and Video Umbrella, this season, titled Move On Up, is curated by Because favourites Animate Project, and is comprised of work by artists including Andrew Kötting, Dryden Goodwin, Semiconductor, Suky Best, Run W rake, Kayla Parker, Tal Rosner, Alan Warburton, Katerine Athanasopoulos, Susan Collins, Simon Faithfull, Stuart Hilton, Andy Martin, Joe Magee & Alistair Gentry, Caroline Melis and Susanne Flender. Quite a Who's Who if ever we've seen one. And it's shaping up to be The art event in East London's jam-packed summer. Opening tonight and on display by the Museum of London Docklands until 26 August, this season will be followed by curated commissions by LUX and the BFI. Such public commitment to artists' moving image is rare (though currently becoming less-so), and the quality is there to rival any other part of the Cultural Olympiad. Hats off, then, to everyone involved and TfL (at least they can get one thing right on the Jubilee Line). Then off to the Slug & Lettuce to watch the sun set over the Orbit Tower.

Move on Up (http://art.tfl.gov.uk/canary-wharf-screen) is at Canary Wharf Station from tonight, until 26 August 2012.

| FROM BECAUSE ARCHIVE |



Your daily digest of fashion news

The making of Harrods' Diamond Jubilee crown collection

If you are into jewels, you'll love this...> (http://fashion.telegraph.co.uk/columns/belinda-white/TMG9269609/The-making-of-Harrods-Diamond-jubilee-crown-collection.html)

Royal Mail Releases Great British